



PET Extrusion Technology



■ PET Total Solution

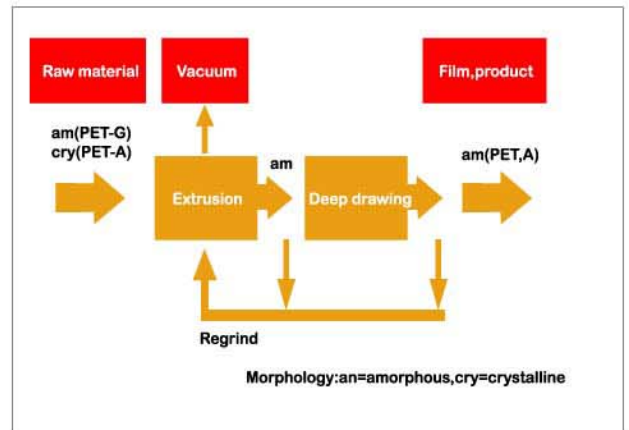
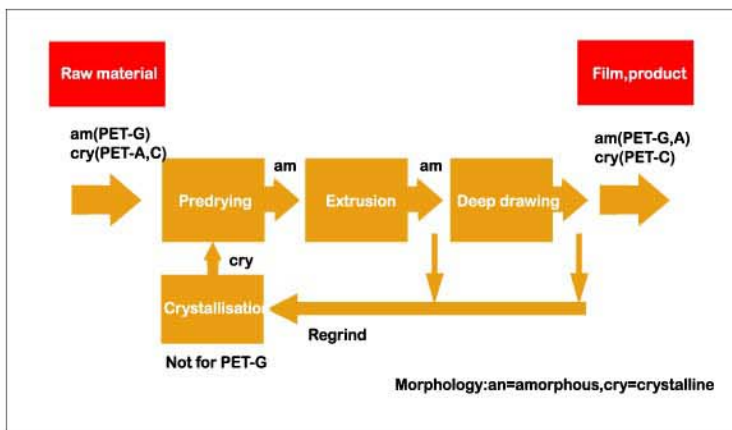
Loss of IV is confusing PET recycle. After USEON unceasing efforts, we solve this problem perfectly. TDY counter rotating twin screw extruder is different from normal one. It features high speed, higher capacity, and more applications. TDY can extrude sheet, board, film directly without pre-dry. It has significant advantage in energy-saving.

■ Direct Extrusion without Pre-Dry

Special design for all kinds PET extrusion, TDY series extruders don't need pre-dry any more. This development not only simplifies the process flow, but reduces the energy consumption significantly. Especially for PETG, it is free of completed pre-dry process absolutely.

■ Ideal IV control

It is well-known, IV control is very important for PET recycle. Without pre-dry, TDY can control the loss of IV very light. With proper additives, TDY can make chemical IV increasing on line. From washing to pelletizing and profiled extrusion, we have total solution for PET recycle.



■ Advanced Sheet/Film Technology

With particular technology and engineering experience, USEON develops and perfects the sheet/film extrusion line. The main advantages are the compounding and pelletizing technology of twin screw extruder. Integrated with advanced control system, its post stretch and calibration also have excellent performance. USEON did better more than what you expected.

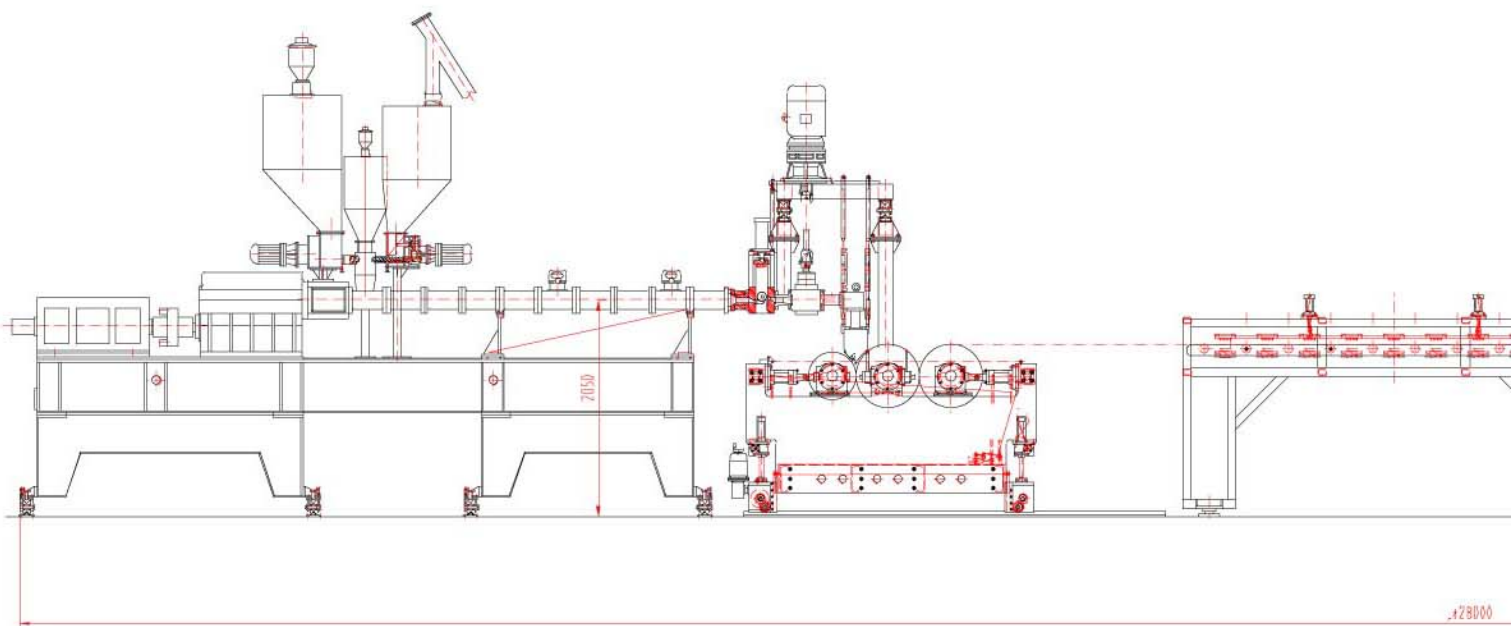
■ PET Composite Sheet Production Line (APET PETG CPET)

Without pre-dry direct extrusion technology not only simplifies the process flow, save cost, energy saving, but provides special sheet on-line compounding.

Direct extrusion technology uses 100% crushed bottle flakes or mixture of recycled and virgin materials to extrude sheet directly.

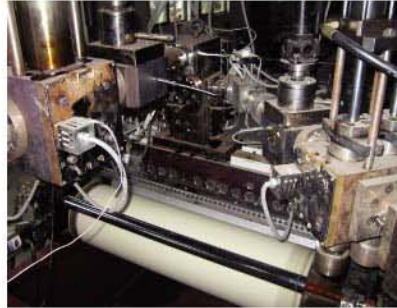
Wider thickness range: 2-4.5mm

Advanced composite lamination technology: A/B/C or A/B/A profile.





Plastic sheet/board/film production line



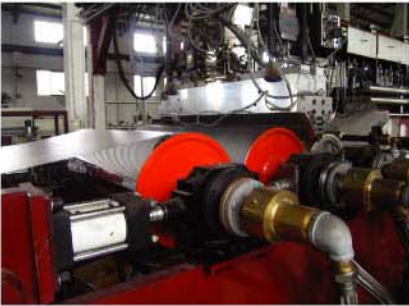
Composite extrusion distributor and mold



Sheet Extrusion



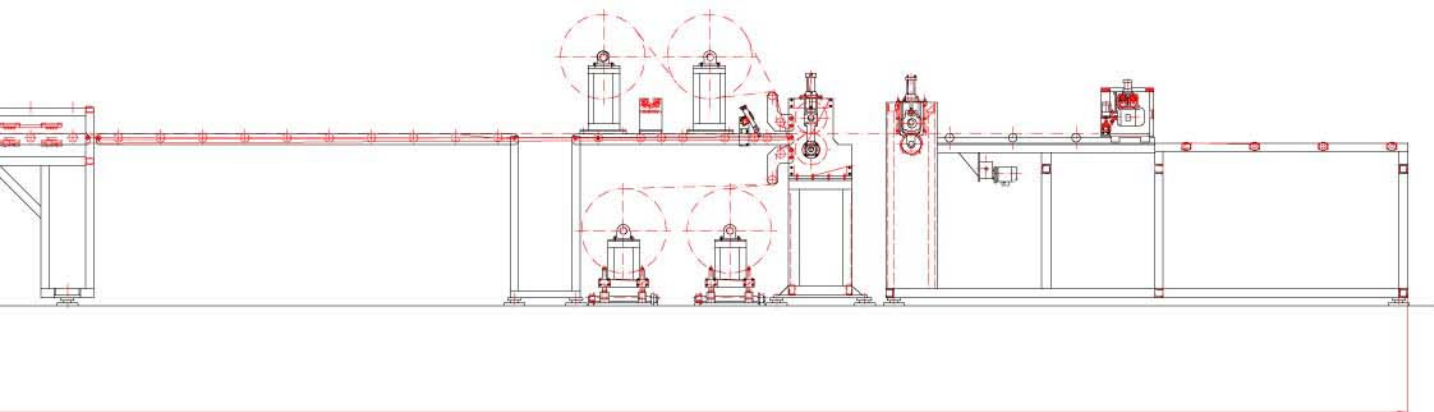
Control System



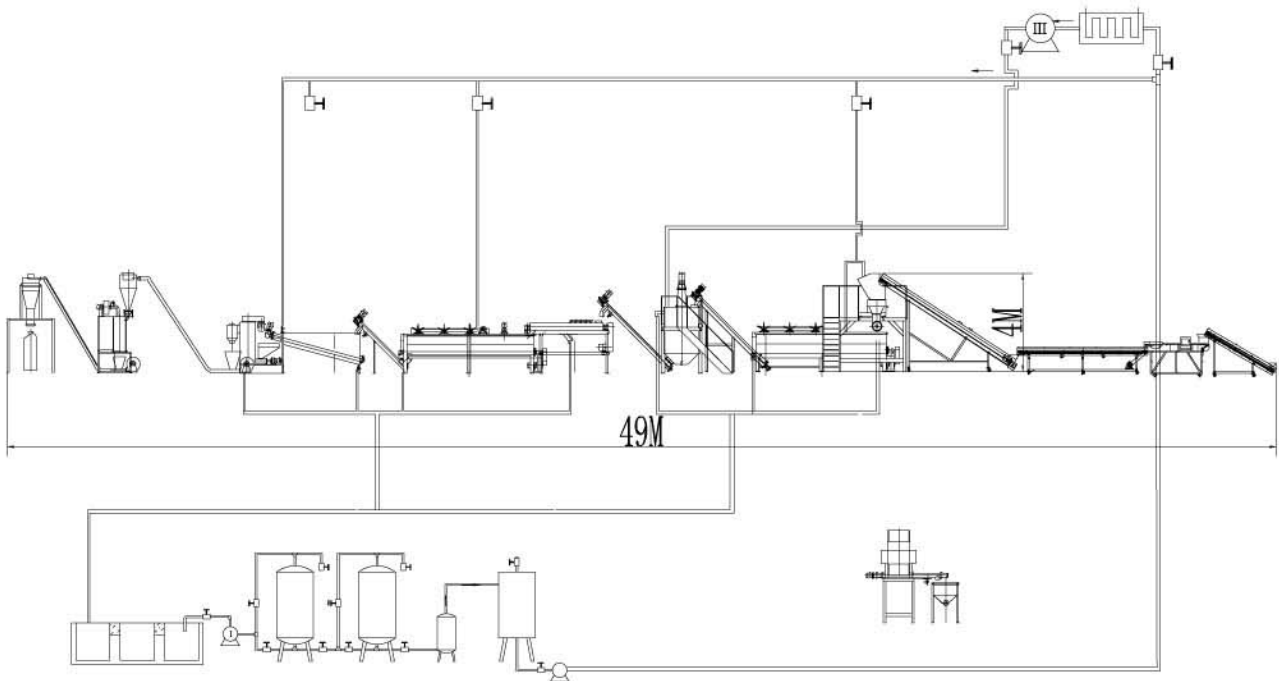
Calender



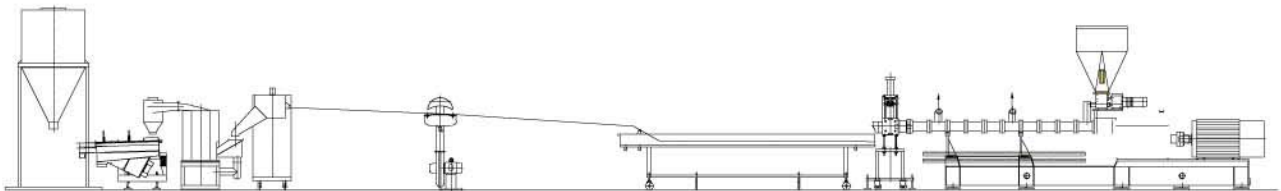
Thickness auto-tester



PET bottle flakes crushing and washing



Recycle and Pelletizing



USEON

Result of Professional

From initial project planning to the commissioning and training, no matter you purchase single machine or complete plant, we will provide turn-key project service.

- Single Screw Extruder/Twin Screw Extruder
- XPS Foam Extrusion Production Line
- WPC Material Production Line
- PET Extrusion Technology
- Plastic Sheet/Board/Film Production Line
- Compounding & Pelletizing Production Line

Address : No.89, Dadingfang Industrial Park, Yuhuatai District, Nanjing China

Post Code : 210012

Tel. : +86 25 52350798 52350368 52356058

Fax. : +86 25 52353368 52352820 Mobile: 13515121788

E-mail : info@useongroup.com

web : <http://www.useongroup.com>